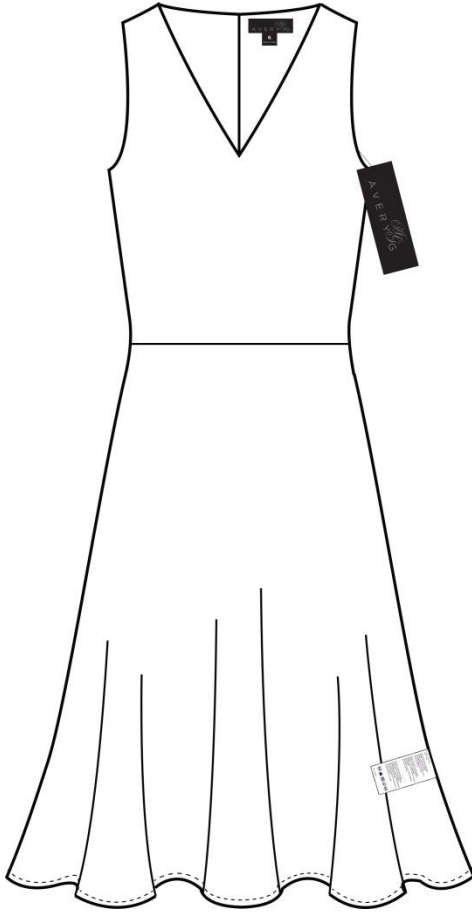


Avery G - House



Main Label / COO Label

Avery G neck label gets sewn into the neck to the wearer's left of the zipper. COO / size label gets sewn onto the main label at the center. (See below photo for detailed photo.)

Care Label

Care label must be sewn into the wearer's left side of the dress, 6" above the hem into the side seam. English, Spanish, and French are required on all care labels.

Company Hang Tag

Avery G hang tag must be placed in the wearer's left hanger tape near the armhole with a 3" clear swift tag. (See below photo for detailed photo.)

RFID/UPC Sticker

RFID/UPC stickers must be placed on the blank side of the company hang tag. (See below photo for detailed photo.)

Polybag Sticker

UPC stickers must be placed on polybags, roughly 5" below the top edge, and roughly 3" away from the edge of the polybag's left side.

Hanger / Size Clips

484-Black hangers. No size clips required.

Item	Supplier	Item Number
Main Label	Factory or Production	N/A
COO / Size Label	Factory or Production	N/A
Company Hang Tag	Factory or Production	N/A
RFID / UPC Sticker	Factory or Production	N/A
Polybag Sticker	Factory or Production	N/A

Main Label Detail



Hang Tag Placement



RFID / UPC Sticker Placement



Polybag Sticker Placement

